



PRO ROAD Charleston

WEST VIRGINIA



Accessing First Presbyterian Church - SAT/SUN

On Saturday, May 18 from approx. 5A-7P and Sunday, May 19, 2024, from approx. 6A-7P, access to First Presbyterian will be impacted due to the USA Cycling Road Race taking place on Kanawha Boulevard, Quarrier St, and Brooks St (— —).

Enter via Leon Sullivan Way (→) -- CPD will assist with crossing the race route at Quarrier St (▲).

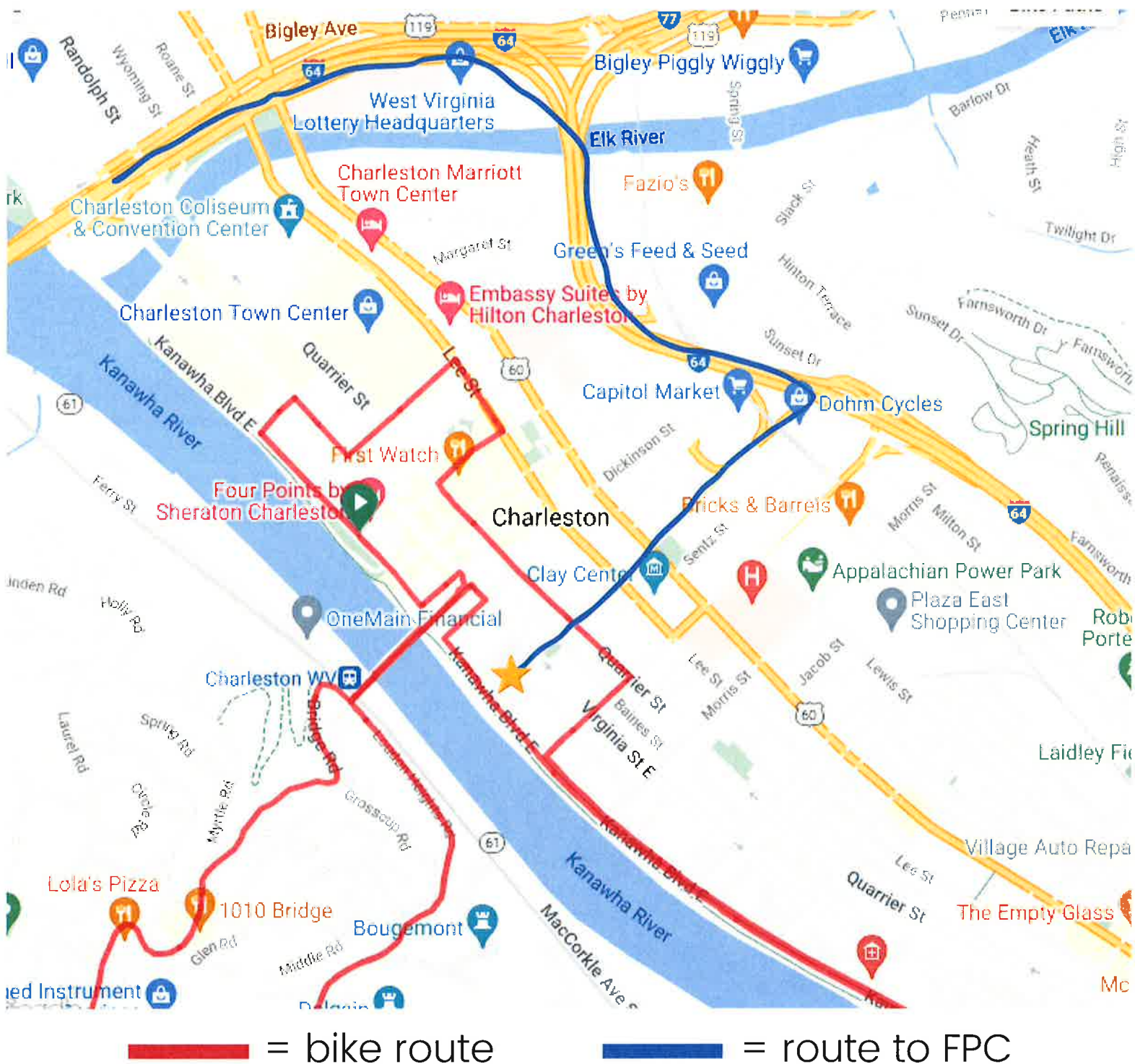
Exit via alley and through lot to Virginia St to Brooks St (→) -- CPD will assist with crossing the race route at Brookes St (▼). **Please do not take alley to Brooks(— —).**



Directions to First Presby

Saturday May 18 and Sunday May 19

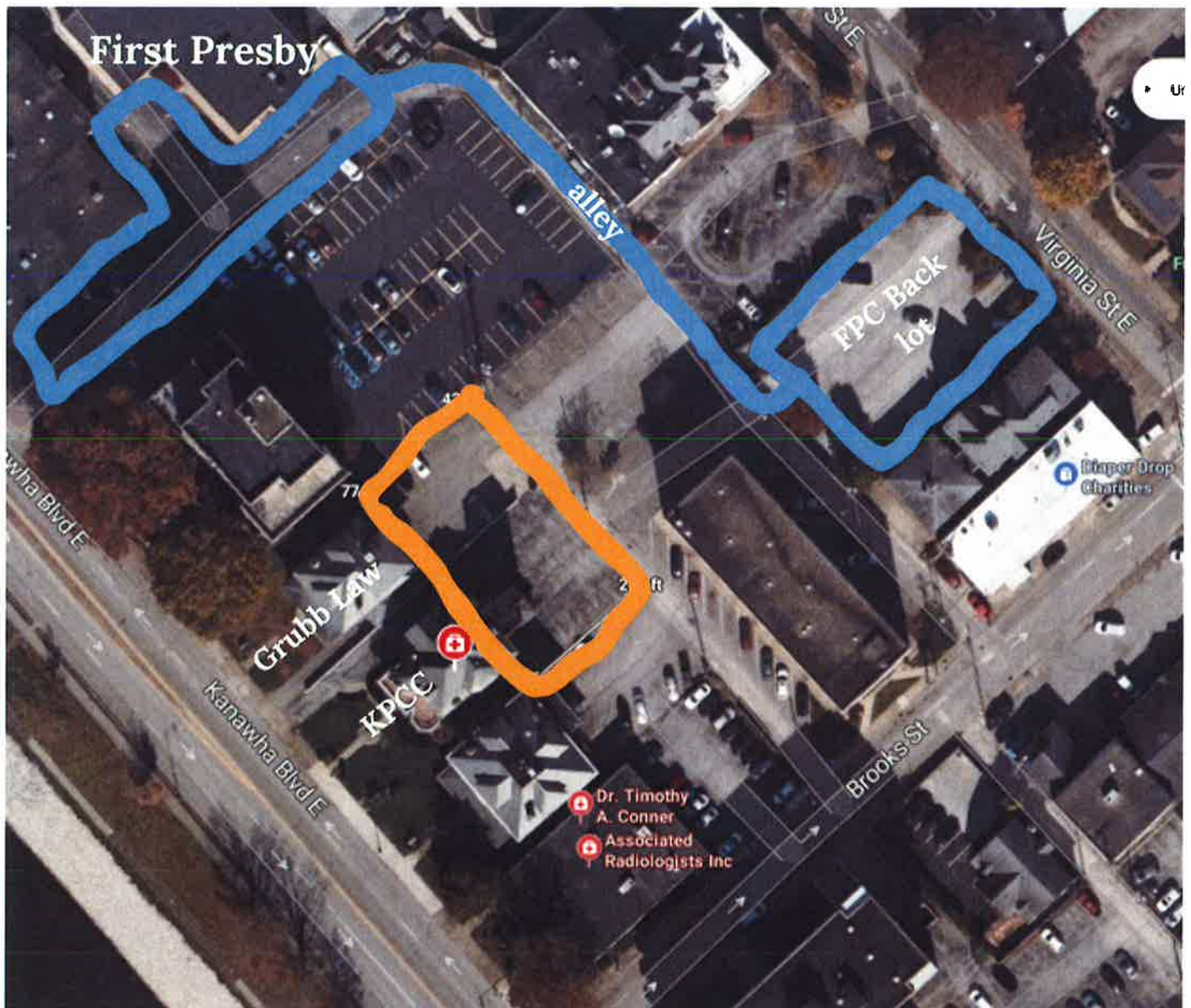
The Southside Bridge will be closed for the races. Take 64E (—) to Exit 100/Leon Sullivan Way, then continue straight to the church.



Parking at First Presby

Saturday May 18 and Sunday May 19

Our [MAIN LOT](#) will be open and accessible from Leon Sullivan Way only. Additional parking will be down the alley to our back lot in [BLUE](#) and overflow will be in [YELLOW](#).



We have permission from [Grubb Law and KPCC](#) to use their back parking lots if necessary.

Additional Parking at First Presby

Saturday May 18 and Sunday May 19

Overflow parking will be available at 1012 Kanawha Blvd.
There is a spa open on Saturday the 18th in that building,
please leave 6-8 parking spaces available for them.

Sunday, we can use the whole lot.



---- walking route to access FPC
due to the blvd being closed