

The First
Presbyterian Church
16 Leon Sullivan Way
Charleston, WV
25301-2487

EMAIL: [firstpresby@
firstpresby.com](mailto:firstpresby@firstpresby.com)
www.firstpresby.com

Bill McCoy
Pastor

Jim Roberts
Associate Pastor for
Congregational Care

Claire Butler
Associate Pastor for Youth

A. D. Ellison

Richard Lamb
Parish Associates

Jim Buckalew
Fellowship, Recreation
and Property

Robin Harlow
Visitors/New Members

Barbara Hopta
Children's Ministry

Jackie Lilly
Business Administrator

Frankie McCain
Community Ministry

Mary Odin
Music Director

Sarah Lynch
Youth Choir

Debbie Eads
Children's Choir

Rob Peterson
College Campus Ministry

Ginna Taylor
Preschool Director

Amber Panetta
Assistant Preschool Director

Kathy Bruner
Child Care Coordinator

Tom Daugherty
Librarian

Fred Gaul
Organist

FACILITY STAFF
Lee Richardson, Supervisor
Sherry Ball
Claude Churchwell
Kim Moles

SUPPORT STAFF
Ina Armstrong
June Mills
Jenny Pitchford
Marilyn Walbe

MISSION WORKERS
Bill Soldwisch-Mexico
Art & Sue Kinsler-Korea
Jolana & Stefan Nather
Slovak Republic
Matthew & Simone McKinnon
Brazil

**MINISTERIAL
CANDIDATES/INQUIRERS**
Leslie Clay
Kate Hopta

PASTORS EMERITI
Thornton W. Tucker
P. Douglas Heidt
A. D. Ellison

DECEMBER 2008

First Presby News

Volume XXXIII, Issue 12

First Presbyterian Church will strive to be a welcoming home, a beacon of Christ's light arising from inspiring worship and loving discipleship.

Sunday Worship 8:45 and 11:00

11:00 Radio Broadcast: 580 AM WCHS

Phone: (304) 343-8961 Fax: (304) 343-8970



Photo credit: Bob Schacht

From the Pastor:

As you receive this newsletter, Christmas themes will have been virtually all around us for at least six weeks! It seems to have begun particularly early this year! Perhaps I should complain about all of that, but I must admit that I love just about all of it. I begin to anticipate the season of Advent and Christmas around mid October and it builds from there!

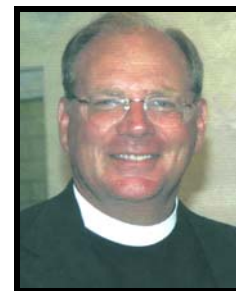
My hope is that to whatever extent that each of us welcome, or resist, all of the Holiday hoopla, all of it will serve to remind us over and over, of the deep wonder of Christmas... We celebrate the Incarnation of God Himself. That is, we celebrate the coming of God into our world having "put on flesh" or having been "enfleshed" as a human being – literally one of us. As such, God experienced everything you and I face in our lives. He experienced joy, laughter, deep friendship... He knew pain, heartache, betrayal and deprivation. Further, He has done the work, that only He could do, to open the way of salvation and life eternal for each of us. Because of that, we are now called to be the incarnation of Christ in the world - to be His presence in a hurting and needy world.

We are called to be, and live, as daughters and sons of God, receiving and reflecting His love, joy, grace, and peace throughout our lives. The Church family is the place and the people wherein we can explore just how to do that. Here we are met with countless avenues to discover, pursue and develop the gifts, talents and strengths that can powerfully reflect and incarnate the living Christ in our world.

May the wonder and the joy of all of the possibilities of Christ uplift you this Advent and Christmas season and may you know His deep, healing and restorative grace and peace this year. God bless you.

See you in Church!

Bill
Bill



Bill McCoy
Pastor



Advent and Christmas Worship

Advent Workshop	Dec. 7	9:45 a.m. in the Dining Room
Lesson and Carols	Dec. 14	8:45 and 11:00 Worship
4th Sunday of Advent	Dec. 21	8:45 and 11:00 Worship
Christmas Eve	Dec. 24	5:00 p.m. Children's Tableau Worship 11:00 p.m. Candlelight Worship



WHAT IS THE CHRISTMAS JOY OFFERING?

A Presbyterian tradition for almost seventy years, the Christmas Joy Offering is one of the four special offerings designated by the General assembly of the PC(USA) to provide congregations direct ways of supporting specific causes that help those in need.

The receipts from the Offering are distributed equally to the Board of Pensions for assistance programs and to Racial Ethnic and Women's Ministries of the General Assembly Council to support Presbyterian racial ethnic education.

Through the Board of Pensions' Financial Assistance Programs, the Christmas Joy Offering recognizes the faithfulness of current and retired church workers by providing funds to help them through difficult times. Each of these grants is an expression of Presbyterians faithful witness to and sharing of the love of Christ for all people. Shared and Emergency Assistance Grants help people with financial needs resulting from a variety of problems: an unemployed spouse, a flood or tornado, a seriously ill child, or unexpected family expenses. Again and again, recipients of grants large and small say that as important as the financial assistance was, what really sustained them was the knowledge that the church was standing with them in their time of need.

The Presbyterian Church has long promoted education through establishing and supporting racial ethnic schools and colleges. Christmas Joy Offering funds provide scholarships to deserving students as well as help with basic operating costs. These institutions develop leaders in the church and in society, and they enable students to discover and pursue their professional goals.

CAN YOU MAKE A DESSERT FOR MANNA MEAL?

Manna Meal's Christmas Party will be held on Saturday, Dec. 13. Starting time: 11:30 a.m. - 1:00 p.m. We're asking the people of First Presbyterian Church to supply desserts for 250 people. If as many ladies and gents as possible could drop off baked goods and such at St. John's kitchen by mid-morning on Dec. 13, it would be much appreciated. Thank you so much.

Blessings, Vic Burkhammer
First Presbyterian's representative to Manna Meal

CHRISTMAS MEMORIALS

Envelopes are in the pew racks for contributions to our Worship Memorial Fund in honor or memory of loved ones. Names will be printed in a special insert for the Christmas worship bulletins. Deadline: Dec. 14. These Christmas Memorials are given to enrich worship at the church.

LEARN MORE ABOUT FIRST PRESBY

Visitors and New Members, please save these dates! **January 11, 18 and 25 are the dates for the next three-part series of Inquirers classes for newcomers.** If you would like to learn more about Presbyterian beliefs and theology, ask questions of the pastors, or take a tour of the church buildings, this class is for you. You will receive more information after Christmas. Questions? Call (343-8961) or email robin@firstpresby.com.



SHEPHERD'S CENTER

Shepherd's Center announces its seventh annual Holiday Decorating Sale on Dec. 4 from 10:00-11:45 a.m. and 1:00-2:00 p.m. in Room A-201.

New and used Christmas, Hanukkah and Kwanzaa decorations have been donated and will sell at bargain prices! Come, browse and find just what you are looking for!

The Shepherd's Center's Holiday Luncheon on Dec. 4 at 11:45 will feature Presbyterian Chicken, peas, cranberry salad, rolls and dessert.

Rev. Dr. Randy Flanigan, pastor at Christ Church United Methodist, will provide special musical entertainment. Please make your reservation with Diane Clements at 343-0590 before noon on Dec. 1.

BLOOD PRESSURE CHECK

Get your blood pressure checked by a nurse, Sunday, Dec. 14, in the Cablish Room off the main church hallway.

ALZHEIMER'S FAMILY SUPPORT GROUP

The Alzheimer's group will meet Tuesday, Dec. 16, 7:00 p.m., in Room E-310. For more information call 744-7634.

LOST YOUR JACKET?

Several children's jackets are in the "Lost and Found." Stop by the church office to claim them.

FINANCE DIVISION REPORT FOR OCTOBER 2008

	Budget	Actual	Difference
Pledge Offerings:	\$ 85,000	\$ 65,309	\$ (19,691)
Trustee Funds:	25,229	29,029	800
Other Revenue:	8,015	13,406	5,391
Total Income:	121,244	107,744	(13,500)
Expenses:	128,351	126,396	(1,955)
Net Income:	\$ (7,107)	\$ (18,652)	\$ (11,545)

No offering is too humble or too extravagant if given from the heart.

YEAR-END GIVING

It's not too early to begin planning for 2008 year-end giving and its tax consequences. This is especially true if you are considering gifting shares of mutual funds, which can take more than 30 days to transfer between accounts.

The IRS provides guidelines about what year a taxpayer may take a deduction for a charitable contribution. The chart below provides general guidelines.

Contribution	2008 deduct	2009 deduct
Checks written in Dec. '08 and deposited in offering in January '09		X
Checks written and deposited in church in Jan. '09 but "backdated" to Dec. '08		X
Checks written and deposited in offering in Dec. '08 but "postdated" to Jan. '09	X	
Checks written in Dec. '08 and deposited in the mail and postmarked in Dec. '08, but not received by the church until Jan. '09	X	
Checks written in Dec. '08 and deposited in the mail in Dec. but not postmarked until Jan. '09		X
Shares of securities transferred from the donor's account in Dec. '08 but not received into the church's brokerage account until Jan. '09		X

For further information please consult your tax advisor.

CHARITABLE IRA ROLLOVER EXTENDED

The Pension Protection Act of 2006 has been extended to include direct IRA distributions to charities made in 2008 and 2009. Taxpayers age 70 ½ and older may make contributions directly from a traditional IRA or Roth IRA without counting them as a part of their adjusted gross income, and consequently, without paying taxes on them. You may benefit from this provision if . . .

- You don't itemize deductions;
- You itemize and have reached the charitable giving limit;
- Your tax deductions decrease as your income increases;
- You live in West Virginia, a state that doesn't permit tax deductions for charitable donations.

Consult your tax or legal advisor for professional guidance.



DECEMBER BIRTHDAYS!

Congratulations to those who will be celebrating a "90 and over" birthday during December:

Alicie Filomino	Dec. 1
Mary Williams	Dec. 3
James McLaughlin	Dec. 7
Margaret Shepherd	Dec. 8
Harry Mitchell	Dec. 15

PARTNERS IN PRAYER

We pray for churches in our presbytery, and in the Presbytery of Nyeri in Kenya, Africa.

- Dec. 7: Pickens; Riverlawn, St. Albans; The Staff of the Presbytery of WV; Muithuaini Church, Kenya.
- Dec. 14: Summerlee; First Nitro; First Williamstown; Philip Nganatha Memorial Church, Kenya.
- Dec. 21: First Bluefield; Highlawn, St. Albans; First Whitesville; Wandumbi Special School for the Mentally Retarded, Kenya.
- Dec. 28: Bridgeport; Belle; Scott Memorial, Bowden; Gatumbiro Church, Kenya.

Presbyterian Women's Luncheon

December 18th 12 Noon – 1:00 PM

MASTERPEACE

Five women and a pianist will entertain us with wonderful music!

Joan Ellison will lead the Prayer Group starting at 11:30 a.m. in Room A-201.
Be sure to make your lunch reservation by Nov. 17 by calling 343-8961.
Child care is available if reserved in advance.

Let Heaven & Nature Sing!

SCHEDULE FOR WOMEN'S CIRCLE BIBLE STUDIES

DATE	NAME	CIRCLE CHAIR	PLACE	TIME
Dec. 11	Leah	Sally Slicer 346-1873	A-201, Hostess: Everyone!	9:30 a.m.
Dec. 11	Mary	Sue Shawkey 342-4233 Betty Damewood 346-4417	Edgewood Summit	10:00 a.m.
Dec. 11	Miriam	Sarah McGriff 744-3751	Hostess: Naomi Krieg 2012 Northwood Rd.	9:45 a.m.
Dec. 11	Martha	Sara Joseph 343-1210 Jackie Taylor 346-6147	A-204, Bring a "brown bag" lunch.	Noon
Dec. 11	Rebecca (Dinner)	Pam Healy 744-6356 Beth Ann Surber 342-7988	Dining Room-Call to make a dinner reservation.	6:00 p.m.
Dec. 18	Hannah	Nancy Martin 744-9456	A-204	10:30 a.m.
Dec. 18	Ruth	Betty Ann Morton 344-4507 Ruth Pitchford 346-8494	A-201	10:30 a.m.

CHILDREN AND FAMILIES

PRAYER FOR THE DAY

God, we are waiting for the birth of the Prince of Peace. Today we remember people all over the world who long for peace in their homes, their schools, their neighborhoods, and their cities. Come, Lord, and bring your peace. Amen.

BLESSING FOR MEALS

As we eat this meal, Lord, help us to remember that the birth of Jesus brings "tidings of comfort and joy" to all of the world. Show us ways to share that comfort and joy with one another and with all your children as we strengthen our bodies for service. Amen.

BIBLE VERSE

Do not worry about your life, what you will eat or what you will drink, or about your body or what you will wear? Look at the birds of the air; they neither sow nor reap nor gather into barns, and yet your heavenly Father feeds them. Are you not of more value than they? (Matthew 6:25-26)

WORD OF THE MONTH

Comfort: The world comfort comes from the Latin words for "strength" and "with." Comfort is a strength that we get from each other, a strength that we borrow from others or lend to others.

WHAT YOU CAN DO

This month, pay special attention to the people you spend the most time with – friends, members of your family, teachers. Do any of these people seem to be more sad or upset than usual? Try to think of one thing you can do or say to help each of those people know you care about them.

GIVING WHAT YOU HAVE

How big is your family? Include all of your family members: grandparents, aunts, uncles, cousins, parents, sisters, brothers, you! Put a dime in your Christmas Joy Offering box for every family member whom you've seen this year. How many people are there in the family of God? Is there anyone who isn't one of God's children? Imagine your gifts and the gifts of everyone you know spreading out to give a hug to all of God's family.

Portions from **2008 Children's Mission Yearbook**. Copies are available in the CE Office.

NEW BABY

Congratulations to **Amy and Tom Isaac** on the birth of Andrew Robert Isaac, born on October 23, 2008. Andrew joins brothers, Will and Ben. Grandparents are Sissy and Tom L. Isaac.



WEE PEOPLE, ADVENT WORKSHOP, AND CHILDREN'S TABLEAU

If you're new to First Presby these are terms you need to know!

The **Wee People**, life-size soft dolls made by members of First Presby, will teach us the progression of Advent, Christmas and Epiphany. Mary and Joseph appear in the sanctuary on November 30, the first Sunday of Advent, as they begin their journey to Bethlehem. Don't hesitate to sit with the Wee People! They love company, I'm told, and are quite cozy. Keep an eye out for shepherds, sheep, Gloria, baby Jesus and the Wisemen. All will come to lead us through the season as we wait, prepare, and celebrate!

Enjoy the **Advent Workshop** on Sunday morning, Dec. 7, 9:45 in the Dining Room. Paint, glue, glitter, wooden figures, cloth – try it all as we create nativities and other special items to take home. Parents, children and middle school youth enjoy this event each year during the Sunday school hour, brought to us by the Children and Family Committee.

At 5:00 on Christmas Eve the Christmas story comes alive with our **Children's Tableau**. Preschool and elementary children lead us in this special worship service that is a heartwarming experience for the many who attend year after year. Costumes will be assigned after 11:00 worship on Dec. 7 in Room E-302. We rehearse on Saturday, Dec 20, from 10:00 a.m. until noon in the sanctuary. All participants report to the Ruffner Room on Christmas Eve at 4:00 in anticipation of a magical evening worship service that celebrates the birth of Jesus.



PRESCHOOL CHRISTMAS TREE

"*Oh the weather outside is frightful . . .*" those lyrics have little meaning to us in mid-November. Although sometimes it does get quite cold in November, we've not had frightful weather yet this year... it is coming! We are inviting you now to think of the many children right here in Charleston that do not have mittens, hats and scarves to keep warm.

We are asking each family to bring a new pair of mittens or gloves, of any size (especially bright colorful ones!). We will be hanging these gifts of love on a Christmas tree outside the Preschool Office so that everyone can share in the warmth of giving and pride they will display. All of the mittens, gloves, hats and scarves will be given to the local clothing closet (and some to our Food Pantry for when children come to visit there) and will benefit local children.

We thank you for your participation in this project. It is our hope that through this cooperative venture between the Preschool and home, the concept of sharing through giving will be modeled. Help us fill the tree this month...with love!

GINNA TAYLOR – Preschool Director

ADVENT

The term Advent means "coming." In the church we refer to Advent as a season, a time of waiting and preparation for the coming of Christ. Our culture would have us spend a lot of time and money in preparation for the Christmas season, but the church calls us to set aside time to pray, read scripture, to rest, to keep Sabbath, to remember the poor and lonely.

Special Advent devotional material is available to you for use at home on the table outside of the church office. Advent begins this year on Nov. 30.

My friends, be patient until the coming of the Lord. Think of farmers who wait patiently for the spring and summer rains to make their valuable crops grow. Be patient like those farmers and don't give up. The Lord will soon be here!



YOUTH NEWS: MIDDLE SCHOOL & HIGH SCHOOL

9:45 SUNDAY MORNINGS

MIDDLE SCHOOL in Room E-406

During the Month of December the Middle School Sunday School will continue a study on the Gospels.

On December 7 they will take a break from their studies to participate in the Advent Workshop. They will have an opportunity to use paint, glue, wood, paper, cloth, beads and other items to make decorations, wreaths and other items related to the advent season. Refreshments will be provided.

EIGHTH GRADE CLASS SUNDAY MORNINGS 9:45 Room E-407

- Dec. 7—9:45 a.m.
The Ten Commandments: Part II taught by Dawn Hawkins
- Dec. 14—9:45 a.m.
The Ten Commandments: Part III taught by Dawn Hawkins
- Dec. 21—9:45 a.m.
Make sandwiches and deliver them to Manna Meal
- Dec. 28—No Class,
Merry Christmas!

HIGH SCHOOL in the Youth Lounge

In December the High School Youth will be studying **The Gospel According to Disney: Faith, Trust, and Pixie Dust** by Mark I. Pinsky. We will explore the roles that the animated features of Walt Disney played on the moral and spiritual development of generations of children.

- ☆ Dec. 7: The Jungle Book
- ☆ Dec. 14 The Lion King
- ☆ Dec. 21: Peter Pan
- ☆ Dec. 28: The Little Mermaid

YOUTH GROUPS ON SUNDAY EVENINGS

MIDDLE SCHOOL 4:30-6:00 p.m.

- * Dec. 7 Middle School @ the Movies: The Nativity Story
- * Dec. 14 Christmas Party
- * Dec. 17 Church-wide Caroling
- * Dec. 21 Ice Skating
- * Dec. 28 No meeting - *Happy New Year!*

HIGH SCHOOL 7:00-8:30 P.M.

- * Dec. 7 High School @ the Movies: The Nativity Story
- * Dec. 14 Christmas Party
- * Dec. 17 Church-wide Caroling
- * Dec. 21 Light Show @ Coonskin/ Ice Cream Party
- * Dec. 28 No PYC, *Happy New Year!*

NINTH GRADE CONFIRMATION

The next segment for ninth grade confirmation will be January 30-31, "Our Faith and the World," at Camp Virgil Tate. During this retreat the Confirmands will consider how we respond to the issues of the world as Christians that exist in the rest of the world and also in our own back yard.

Call Claire Butler, Associate Pastor for Youth, with any questions: 343-8961 ext. 119.

BAD WEATHER POLICY

Regarding Church Activities

If Kanawha County Schools are closed due to weather, all meetings and activities in the church are cancelled. If public schools close early due to weather, all meetings and activities in the church are cancelled for that evening. If school opening is delayed, activities will not be delayed.

Please do not come out if it puts you at risk for injury.

Worship Services will always be held!

PRAY FOR THOSE IN THE ARMED FORCES

MM2 David A. Kaylor, aboard the aircraft carrier, U.S.S. Dwight D. Eisenhower (grandson of George and Thema Frisch)
2nd Lt. Matthew M. Bruner, US Army, Ft. Benning, GA
Aaron Lloyd, Kuwait/Iraq (step-grandson of Betty Lloyd)
Edwin Anderson, Afghanistan (cousin of Mary Odin)
Airman First Class Caitlin Workman, Omaha, NE (granddaughter of Pat Workman)
Tory Walbe, Iraq (stepson of Marilyn Walbe)

Airman 1st Class Franz S. Workman IV, Moody AFB, GA (grandson of Pat Workman)
Warrant Officer David McDarmont, OH (son of Liz O'Finan)
Owen Brown, Pensacola, FL (son of Earle Brown) in the Navy
David Rucker, Germany (Barbara Brown's nephew)
Donald Boylen, VA (grandson of Dick and Becky Smith)

Please call the church office to keep this information current. Thank you.

COMMUNITY MINISTRY



CLOTHING NEEDED

The Covenant House Clothing Closet is in serious need of men's clothing: jeans, work boots, tennis shoes and winter jackets. It's suddenly cold out there. Big sizes are most especially needed. Bring to the church or deliver directly to St. Mark's Methodist Church at Washington and Dickinson streets. A WARM Thank You!

CENTS-ABILITY REPORT

A Cents-Ability Offering of \$568.06 was received on Nov. 16. This offering has been received on a quarterly basis this year for a total of \$2,862. One-fourth of the offering has gone directly to Covenant House Food Pantry, one-half has gone to the Presbytery to support food ministries around the state, and one-fourth to the Presbyterian Hunger Program for hunger reduction projects in Africa. In this way we responsibly care for neighbors near to hand and reach out to brothers and sisters in Christ far away.

EQUAL EXCHANGE

Looking for a gift for a business friend? Or others? Purchase coffee, chocolate, nuts, and more!

GAINING WEIGHT?

Most of us put on a few extra pounds during the holidays. You would be most welcome at the Weight Watchers meeting held in the Ruffner Room on Mondays at noon. We'll start another 12 weeks of meetings after Christmas. Call the church office if you are interested.

FOOD PANTRY LOW IN SUPPLIES

The food pantry housed in the Church is in critical need of food NOW! Please bring in food items each week. When you visit the grocery store, pick up a few items off the list below and bring them to the church. The Pantry needs canned meat, crackers, jam or jelly, soup, non-sugared cereals, Jello, pancake syrup, bread, canned milk, eggs, Bisquick, margarine, canned vegetables, and cheese. Thank you!

BOOK CLUB

The PALS Book Club, sponsored by the Shepherd's Center and the Kanawha Public Library, will not meet in December. The book for January 16 is *Miss Julia Speaks Her Mind* by Ann B. Ross and the February book is *The Professor and the Madman* by Simon Winchester. All who have read the books are welcome to join the group for discussion from 2:00-3:30 p.m. on the third Friday of the month.

SICK, HOSPITALIZED, OR IN NEED OF PRAYER?

Let your church family know of any needs you have. The church has a telephone/e-mail prayer chain, a "pray for" list in the newsletter, and prayers during worship. Tell us your concerns or ask a friend to inform us. If you want to tell us about someone else, a friend or family member, be sure to respectfully ask their permission first. You can also confide in one of the pastors and request it be kept confidential.

WEDDING ANNOUNCEMENT

Congratulations to Mary Alice Hodgson and Nathan Chaffin who were married in New Orleans, LA on October 18, 2008. Sondra Hodgson is the mother of the bride.

NEW CHURCH DIRECTORY COMING!

Many thanks to all who were photographed for the new church directory, which should be ready for distribution in January. Even those who were not photographed may request a directory, and there will be permanent pew copies in the sanctuary. Special thanks to the Visitors/New Members Division for their leadership on this large project (especially Trish Scalise and Kristen Harrison), and to Ina Armstrong, Jackie Lilly, June Mills, Wayne Odin, and Marilyn Walbe.

We also want to acknowledge the creative efforts of Beth Vorhees who recorded oral histories of many of our members as part of the directory project. Thank you, Beth!

DECEMBER 31 GOOD NIGHT CELEBRATION

Performances in our sanctuary on New Year's Eve will be:

7:00 and 9:00 p.m.

Bill McCoy and Friends: Acoustic Folk, Country, Rock and Blue Grass Style

6:00 and 8:00 p.m.

Wayne and Mary Odin: "The Great Music Standards" of the Twenties, Thirties, and Forties.

YEAR-TO-DATE FINANCE REPORT THROUGH OCTOBER

	Budget	Actual	Difference
Pledge Offerings:	\$ 995,000	\$ 805,417	\$ (149,583)
Trustee Funds:	232,530	235,882	3,352
Other Revenue:	103,760	150,225	46,465
Total Income:	1,291,524	1,191,524	(99,766)
Expenses:	1,346,027	1,305,029	(40,998)
<i>Net Income:</i>	<i>\$ (54,737)</i>	<i>\$ (113,505)</i>	<i>\$ (58,768)</i>

You are
invited
to the



Preschool Christmas
Worship
December 16 and 17
at 12:15 p.m.
in the Sanctuary

CAROLING ON THE TROLLEYS

On Wednesday evening, Dec, 17, we will enjoy a very special evening of fun and fellowship as a church family. Here's the plan:

5:45-6:30 p.m. ~ light supper in the Dining Room

6:30-7:00 p.m. ~ share fun songs of the season in the sanctuary

7:15-8:15 p.m. ~ caroling on the trolleys around the city

7:45-8:45 p.m. ~ hot drinks and treats in the Activities Room for everyone

We'll designate at least one trolley to be back by 8:00 p.m. so little carolers can get home in time for bed.

MEMORIAL GIFT ILLUMINATES FIRST PRESBY'S HISTORIC ARCHITECTURE

And God said, "Let there be light."

God works in mysterious ways. Thanks to a series of small events, a generous gift, and the efforts of many, the architectural beauty of our newly renovated Church is now more apparent and compelling than ever. The Capital Campaign for the exterior renovation project did not include the luxury of architectural lighting. Yet as the project neared completion last fall, events coalesced to let the light shine. A gift in memory of H. P. McJunkin, who regularly attended First Presby with his wife and four sons when they were young boys, now lights up our Church when the sun goes down.

What inspired the gift? One day last fall, newly arrived Choir Director, Mary Odin, cheerfully volunteered to deliver Capital Campaign Thank You gifts to residents of Edgewood Summit. When she knocked on the door of Mary McJunkin Gray, she was immediately invited in. During that visit, Mary Odin related the conversation she had that morning with Interim Pastor Bob Newman in the Church parking lot. Based on an experience from the prior evening, Bob had observed that after sunset the Church was "dark as a tomb," so dark that navigating the steps was difficult. Lighting the Church struck Mary as a brilliant idea and a fitting memorial to her late husband, Howard (Mac) McJunkin, who died in 1975. A M.I.T. engineer, Mac had always admired fine architecture, and often commented on the spiritually-uplifting effect of light.

It now fell to others to translate the generous idea into reality. Mike Abernethy, an architectural lighting specialist with ZMM Engineering and the overseer of the renovation project from its inception, again led the way. Jim Buckalew and Lee Richardson also provided characteristically conscientious assistance. Other contributors to the lighting project included Jackie Lilly, who worked with the family on the details of their gift; Marshall Holcomb of Harris Brothers Roofing, who performed the roofing work, and John Wiseman of Wiseman Construction, who -- although not a member of First Presby -- was so taken with the lighting project that he donated the labor to perform the ditching and core drilling work. Others who worked on the project were Bob Kimball of Robert S. Kimball Associates, and Dee McBrayer and Gary Namey of McBrayer Electric Co.

And there was light! (Genesis 1:3)



LESSONS AND CAROLS

On Sunday morning, Dec. 14, First Presby musicians will come together in worship for two special Lessons and Carols services at 8:45 and 11:00 a.m.

The Cherub Choir, Cathedral Choir, Geneva Choir, Cappella Bell Choir, Worship Team, and FPC Lyres Club will each give special musical offerings that morning, and we'll be joined by the Festival Brass players from the West Virginia Symphony.

Come celebrate the season with us in worship!

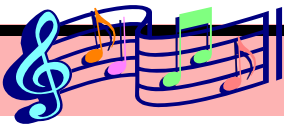


DAILY BIBLE VERSES

- 12/1: Isaiah 2:4
- 12/2: Psalm 122:6-9
- 12/3: Jeremiah 33:14-16
- 12/4: Psalm 122:6-9
- 12/5: Isaiah 65:1
- 12/6: Isaiah 64:3-4
- 12/7: Psalm 72:1-4
- 12/8: Psalm 85:8-9
- 12/9: Isaiah 11:2-3
- 12/10: Psalm 89:1-5
- 12/11: Isaiah 35:1-4
- 12/12: Malachi 3:1-3
- 12/13: Psalm 126:1-3
- 12/14: Micah 5:2-4
- 12/15: Luke 24:26-27, 30-31
- 12/16: Matthew 1:18-20
- 12/17: Luke 2:1, 3-7
- 12/18: Luke 2:8-11
- 12/19: Luke 2:15-16
- 12/20: Matthew 2:7-8
- 12/21: John 1:3b-4
- 12/22: Matthew 3:3
- 12/23: Luke 2:20
- 12/24: Isaiah 65:17-18
- 12/25: Isaiah 9:2
- 12/26: Hebrews 1:1-14
- 12/27: Hebrews 6:1-20
- 12/28: Hebrews 8:1-13
- 12/29: Galatians 3:15-20
- 12/30: Galatians 3:21-4:7
- 12/31: Ephesians 1:15-23

Advent Workshop November 30

Join the Child and Family Committee in the dining room on November 30 at 9:45 for the annual Advent Workshop. A variety of craft activities are planned for children ages two through seventh grade which include making the following: Angels, Nativity Banners, Christmas Cards, Wrapping Paper, Ornaments, Clay Pot Nativities, Painted Stars. Parents are encouraged to join their children during the Sunday School hour (9:45-10:45) for this hands-on experience!



MUSIC AND CHOIR NEWS

FROM MARY ODIN

On November 16, the Geneva Choir was one of seven choirs that participated in the Charleston Choir Festival at St. George Cathedral. Each group sang a few pieces of music that might be used in one of their church services and gave all those in attendance a musical glimpse into other ways of worship. It was a beautiful way to spend an afternoon, and the offering we received raised approximately \$4000 for the Davis Child Shelter.

The choir festival afforded us a wonderful opportunity to turn the pure science of worship music into an applied science, directly benefiting children in need. One person in attendance that afternoon remarked that, even though the event was billed as a concert, it felt like a worship service. No one read any scripture, no creeds were recited, and no one preached. But plenty of scripture was sung, many of our core beliefs were affirmed in song, and the message of the day was clear: Giving one's time and treasure in the name of Jesus Christ to those less fortunate feels like worship because it *is* worship.

The challenge for us, then, in this season of busy schedules and shopping and card-writing, is to find a way to make our very lives into some form of worship every single day. How our lives and our world would be transformed if we acted as though we were in the presence of God in worship all the time! Others couldn't help but notice. In Matthew 5:15-16, Jesus Himself tells us, "No one after lighting a lamp puts it under the bushel basket, but on the lampstand, and it gives light to all in the house. In the same way, let your light shine before others, so that they may see your good works and give glory to your Father in heaven."

As I write this, we are in the season of Thanksgiving, about to enter the season of Advent. We Christians are not only thankful for turkeys and stuffing. We're thankful that, because of the Gift of Christ at Christmas, we literally have been *lit from inside* with the very fire of the Holy Spirit. Shine forth for God this Christmas! Shine so people can see it! Arise! Shine, for your Light has come!

Mary

CHERUB AND CATHEDRAL CHOIRS

On Nov. 2, our Cherubs challenged us to be a witness for our Lord, and on Nov. 16, the Cathedral Choir reminded us to be thankful, for the Lord has been good to us. With the exceptions of Christmas Eve and New Year's Eve, both groups plan to rehearse each Wednesday evening this month from 5:15-6:00 p.m., and both groups will sing in Lessons and Carols worship on Dec. 14 and participate in the Tableau service at 5:00 p.m. on Christmas Eve. Don't forget Caroling on the Trolleys on Wednesday evening, December 17! The Cherub Choir (grades K-2) is now meeting in the newly renovated Susie Early Room. The Cathedral Choir (grades 3-6) meets in Room E-305. Invite a friend to come sing with you this Wednesday!

GENEVA CHOIR

Geneva Choir continues to welcome new singers each week. We will continue to rehearse in the sanctuary until the Choir Room renovations are completed; we meet on Thursday evenings from 7:30-9:00 p.m. Geneva Choir leads congregational singing and provides special music for Sunday worship services, primarily at 11 a.m. and occasionally at 8:45 a.m.

On November 16, we helped raise approximately \$4000 for the Davis Child Shelter as we sang in the Charleston Choir Festival at St. George Orthodox Cathedral. We plan to participate in the combined choir for the Community Thanksgiving Service on November 23 at Morris Memorial United Methodist Church. During December, we will sing in Lessons and Carols worship on December 14, for Caroling on the Trolleys on Wednesday, Dec. 17, and in the 11:00 p.m. Christmas Eve worship service.

To join the Geneva Choir, just come to rehearsal on Thursday. You do not have to be a church member or an experienced musician to sing with us, but it helps to have a sense of humor. We have openings in all sections, so bring a friend!

YOUTH CHOIR

As of this writing, our youth are set to lead music for Youth Sunday worship on Nov. 23. Plans for December are still in the works; contact Sarah Lynch at sjlynch13@gmail.com.

BELL CHOIR

The Cappella Bell Choir will play in both Lessons and Carols worship services on Dec. 14 and at the 11:00 p.m. Christmas Eve worship service. Bells normally rehearse on Thursday evenings from 5:30-7:00 p.m. in the Choir Room, but we will practice in the front gallery until the Choir Room renovations are completed. If you'd like to ring with Cappella Bells, contact director Sarah Lynch or talk to any member of the group. Experience is helpful but not required.

WORSHIP TEAM

The Worship Team provides musical leadership at early and late worship services each week. This ensemble of vocalists and instrumentalists uses guitar, bass, piano, mandolin, and other instruments to accompany congregational song. We normally rehearse in the sanctuary on Wednesday evenings (7:00 or 8:00), depending on the Division meeting schedule. This month, we also plan to participate in Caroling on the Trolleys night on Wednesday, Dec. 17. If you'd like to play or sing with us, contact Mary Odin, 343-8961 ext. 137, modin@firstpresby.com, or speak to any member of the group.



FPC LYRES CLUB

The Lyres Club rehearses Tuesdays in the Susie Early Room from 5:30-6:30 p.m. We opened 11:00 a.m. worship with "Amazing Grace" on Nov. 9, and we plan to play in the annual Community Thanksgiving Service on Nov. 23 at Morris Memorial United Methodist Church. Lyres Club will also play as a part of Lessons and Carols on Dec. 14 and at the 11:00 p.m. Christmas Eve worship service.

If you are interested in learning to play the folk harp with us, contact Mary Odin, 343-8961 ext. 137, or modin@firstpresby.com. No previous musical experience is necessary; instruments and music are available through the church.

DECEMBER 2008

First Presbyterian Church 304-343-8961
 16 Leon Sullivan Way
 Charleston, WV 25301-2487
 EMAIL: firstpresby@firstpresby.com www.firstpresby.com

SUNDAY	MONDAY	TUESDAY	WEDNESDAY	THURSDAY	FRIDAY	SAT
 <p>“That’s right, son—just gold, frankincense and myrrh. No video games.”</p>	1 8:30 Aerobics 12:00 Weight Watchers 2:00 Senior Exercise 6:30 Disciple Class	2 9:30 Bible Study 5:30 Lyres Club 6:15 Karate 7:00 Ballroom Dance 7:15 Boy Scouts	3 8:00 Wednesday Work Crew 8:30 Aerobics, Playroom 2:00 Senior Exercise 5:00 Volunteer Ministry Div. 5:00 Property Division 5:15 Christian Education Div. 5:15 Children’s Choirs 5:45 Wednesday Connections 6:00 Worship Division 6:45 Deacons Meeting 6:45 Personnel Division 6:45 Mission Division-off site 7:30 Contemplative Prayer 8:15 Worship Music Team	4 7:30 Bible Study, Shoney’s 9:00-1:00 Shepherd’s Center activities, lunch & Holiday Decorations Sale 9:30 Francke Bible Study 9:30 PW Coordinating Team 11:30 Bible Moderators 4:00 Trustees 5:15 Coordinating Council 5:30 Bell Choir 6:15 Karate 7:30 Geneva Choir	5 7:00 Men’s Group 8:30 Aerobics 9:00 Dad’s Group 12:00 Ruffner Class Christmas Luncheon 2:00 Senior Exercise	6
7 2nd Sunday of Advent 8:45 Worship 9:45 Children’s Advent Workshop 9:45 Church School 11:00 Worship 4:30 Middle School Youth 7:00 High School Youth	8 8:30 Aerobics 12:00 Weight Watchers 2:00 Senior Exercise 6:30 Disciple Class	9 9:30 Bible study 5:30 Lyres Club 6:15 Karate 7:00 Ballroom Dance 7:15 Boy Scouts	10 8:00 Wednesday Work Crew 8:30 Aerobics 2:00 Senior Exercise 5:00 Finance Division 5:15 Child & Family Comm. 5:15 Children’s Choirs 5:45 Wednesday Connections 6:45 Session Meeting 7:30 Contemplative Prayer	11 7:30 Bible Study, Shoney’s 9:30 Francke Bible Study 9:30 Leah Circle 10:00 Mary Circle (at Edgewood Summit) 12:00 Martha Circle 5:30 Bell Choir 6:00 Rebecca Dinner Circle 6:15 Karate 7:30 Geneva Choir	12 7:00 Men’s Group 8:30 Aerobics 9:00 Dad’s Group 12:00 Trinity Bible Class Christmas Luncheon 2:00 Senior Exercise 6:30 Covenant Class party off-site	13
14 3rd Sunday of Advent <i>Get your blood pressure checked by a Parish Nurse</i> 8:45 Worship 9:45 Church School 11:00 Worship 4:30 Middle School Youth Christmas party-off site 7:00 High School Youth Christmas party-off site	15 8:30 Aerobics 12:00 Weight Watchers 2:00 Senior Exercise 6:30 Disciple Class	16 9:30 Bible study 12:15 Preschool Christmas Worship 5:30 Lyres Club 6:15 Karate 7:00 Alzheimer Support Group 7:00 Ballroom Dance 7:15 Boy Scouts	17 8:00 Wednesday Work Crew 8:30 Aerobics 12:15 Preschool Christmas Worship 2:00 Senior Exercise 5:00 Visitors/New Members Div. 5:00 Fellowship/Recreation Div. 5:15 Children’s Choirs 5:45 Wednesday Connections 6:30 All-Church Christmas Caroling 7:30 Contemplative Prayer	18 7:30 Bible Study, Shoney’s 9:30 Francke Bible Study 10:30 Hannah Circle 10:30 Ruth Circle 11:30 Prayer Group 12:00 Presbyterian Women’s Luncheon 5:30 Bell Choir 6:15 Karate 7:30 Geneva Choir	19 7:00 Men’s Group 8:30 Aerobics 9:00 Dad’s Group 2:00 Senior Exercise	20 10:00 rehearsal for Christmas Eve Children’s Tableau Worship
21 4th Sunday of Advent Joy Offering 8:45 Worship 9:45 Church School 11:00 Worship (No youth group tonight.)	22 8:30 Aerobics 2:00 Senior Exercise	23 5:30 Lyres Club	24 12:00 Church office closes for Christmas Holiday Christmas Eve Worship 4:00 Tableau participants arrive 5:00 Tableau Worship Service 11:00 Candlelight Worship Service	25 <i>Rejoice Emmanuel has come!</i> 	26 Buildings closed	27 Buildings closed
28 8:45 Worship 9:45 Church School 11:00 Worship (No youth group tonight.)	29 8:30 Aerobics 2:00 Senior Exercise	30	31 Buildings close for holiday at noon <i>starting at 6 pm</i> Goodnight 2008 Featuring: Bill McCoy & Friends Wayne and Mary Odin			

Merry Christmas



PRAYER CONCERNS

Please minister through prayer, cards, calls and visits.

OUR SYMPATHY TO . . .

Carol Eich on the death of her mother, Ida Crumrine;

Kathy Lynch and family on the death of her mother, Joan Myers;

Chang Iyer on the death of her brother-in-law, Giduk Jung;

Roberta Allison on the death of her sister, Margaret Moore.

IN THE HOSPITAL . . .

MEMORIAL: Bill Morris, (Lisa O'Connor's brother)

CLEVELAND CLINIC: Liz O'Finan

HUBBARD HOUSE HOSPICE:

Max Blizzard

CURRENT PRAYER CONCERNS . . .

Jim McCain, Don Best, friend of the Doumaux's; Michael Kane, Doumaux's son's father-in-law; Bob Morris; Carolyn Beste, Ann and Bob Morris' daughter; George Hamrick; Bob Turbanic, Bill McCoy's friend; Alvin Castillo and Gracie Black, friends of Steven Slack; Grey Yetter; Sarah Burton and Barbara Twekesbury, friends of Jim Buckalew;

Josie Keaton, granddaughter of Toni and Jim Clendenin; A.D. Ellison; Barbara Gessner; Vincent Morris; Nancy Struthers; Maxine Poe; Rick Flynn, friend of Bill McCoy; Stachia Andrews; Linda Morris; Alice Hobbs, friend of Mary Odin.

EXTENDED PRAYER CONCERNS . . .

Louise Brotherton; Vicki and Barry Blizzard, friends of Jim Buckalew; Bill McCoy's mother and father; Cindy and Gary Hogan, friends of Mendy Stoecklin; Marguerite Kelly, relative of Chick Maddox; Al Stern, Mary Odin's cousin; Ruth Shepherd; Ed Vazquez, Ruth Shepherd's son-in-law; Jack Gastineau; Candy Galyean; David Caruthers, Nancy Brallier's brother-in-law; Anne Taylor Bradley, Jackie Taylor's sister-in-law; Alex Earl, cousin of Chick Maddox; Dr. James Maddox, uncle of Chick Maddox

LONG-TERM PRAYER CONCERNS . . .

Joseph Sprouse; Charles Hendricks; Louise Rosenbaum; Charlie Young (father of Harriett Hoy).

EXPECTANT MOTHERS . . .

Angie Baker, Sonia Doeringer (Mary Odin's sister-in-law); Honor McCain; Amber Panetta.

Call Jim Roberts, 343-8961 ext. 118, to keep him informed, to be removed from the list, or to add yourself or a family member to the list.

In Memoriam

Wilma Sibray
November 2, 2008

FIRST PRESBYTERIAN CHURCH

16 Leon Sullivan Way
Charleston, WV 25301-2487

www.firstpresby.com